



# KEGEL NAVIGATION PATTERNS

## CHALLENGE SERIES

2015年1月,4月,7月及10月聯賽油程(中油)

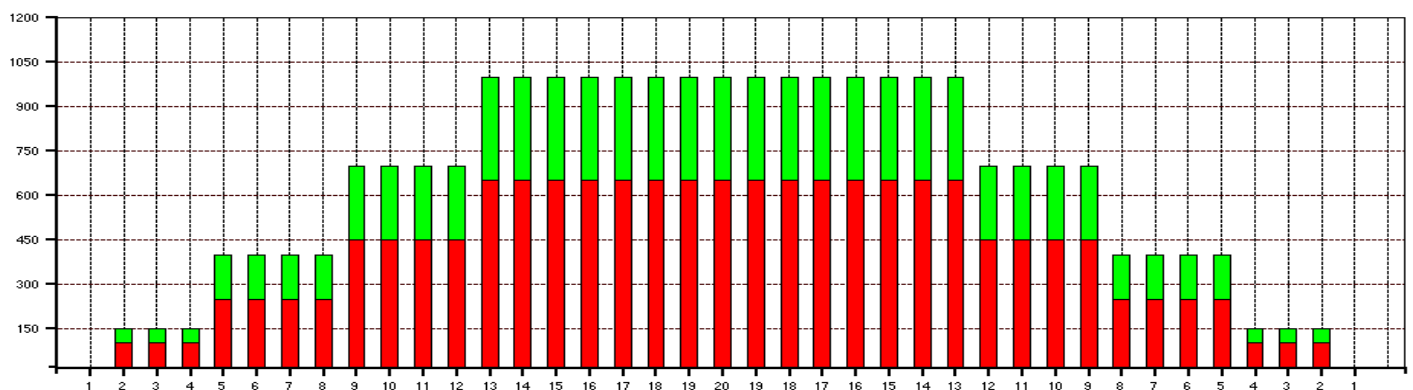
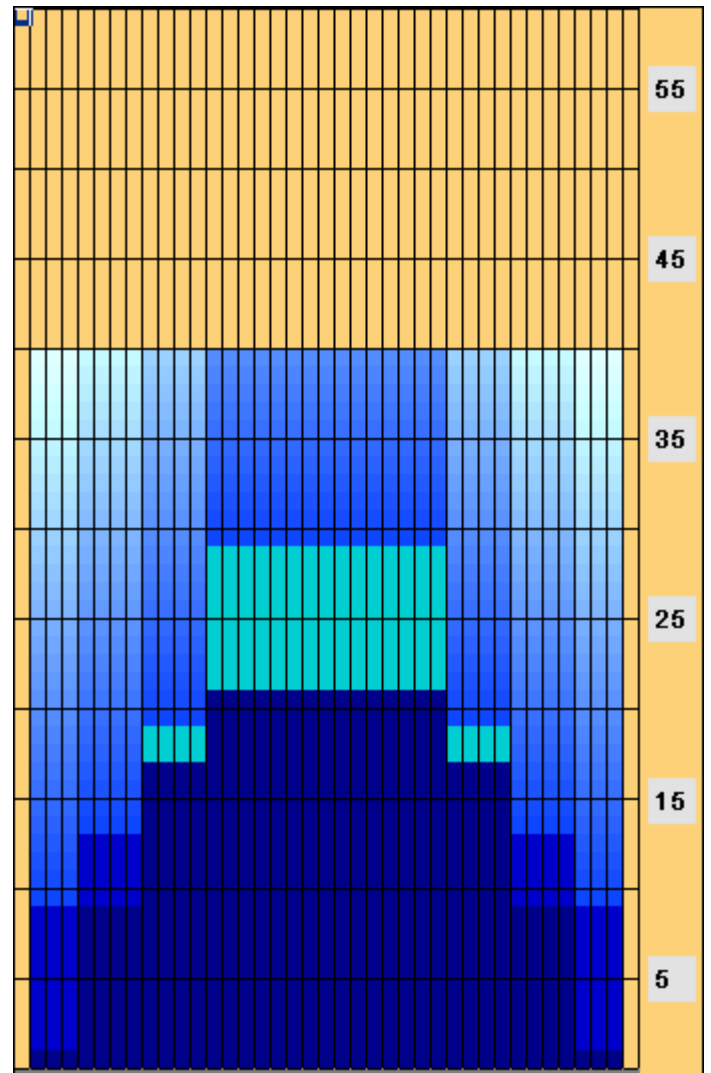


### SUNSET STRIP 3240

The charts on this page are generated by Kegel's KOSI software from the lane machine program sheet.

The **OVERHEAD CHART** on the right shows where the conditioner is applied on both the forward and reverse screens. The gradient area is a calculation of how the conditioner might bleed off the buffer brush.

The **COMPOSITE GRAPH** below shows the total amount of conditioner applied to every board. A good way to think about this graph is to envision all the conditioner on the lane being pushed back to the foul line. Once all the conditioner is stacked up, this is what it would look like.





2015年2月,5月,8月及11月聯賽油程(短油)



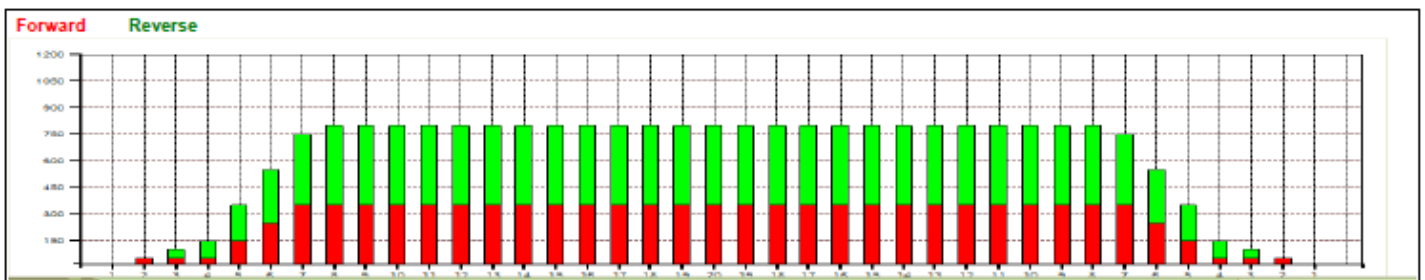
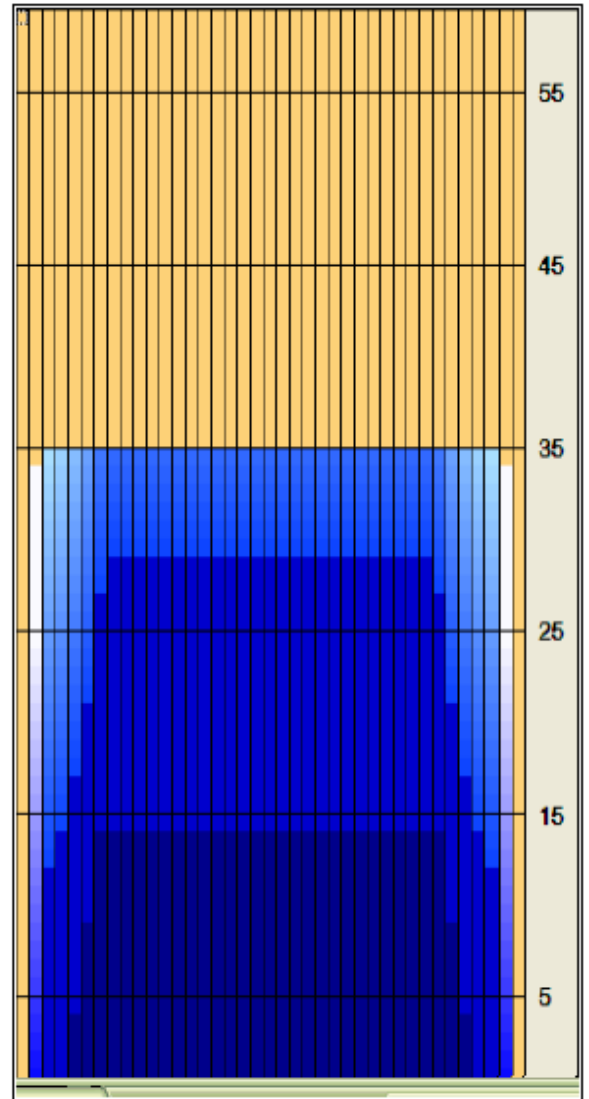
### BOARDWALK 2435

The charts on this page are generated by Kegel's KOSI software from the lane machine program sheet.

The **OVERHEAD CHART** on the right shows where the conditioner is applied on both the forward and reverse screens. The gradient area is a calculation of how the conditioner might bleed off the buffer brush.

The **COMPOSITE GRAPH** below shows the total amount of conditioner applied to every board. A good way to think about this graph is to envision all the conditioner on the lane being pushed back to the foul line. Once all the conditioner is stacked up, this is what it would look like.

Forward Oil  
Reverse Oil  
Combined Oil  
Buff Area





# KEGEL NAVIGATION PATTERNS

## CHALLENGE SERIES

2015年3月,6月,9月及12月聯賽油程(長油)



### ROUTE 66 4345

The charts on this page are generated by Kegel's KOSI software from the lane machine program sheet.

The **OVERHEAD CHART** on the right shows where the conditioner is applied on both the forward and reverse screens. The gradient area is a calculation of how the conditioner might bleed off the buffer brush.

The **COMPOSITE GRAPH** below shows the total amount of conditioner applied to every board. A good way to think about this graph is to envision all the conditioner on the lane being pushed back to the foul line. Once all the conditioner is stacked up, this is what it would look like.

Forward Oil  
Reverse Oil  
Combined Oil  
Buff Area

